

## DashButton Arduino Development environment

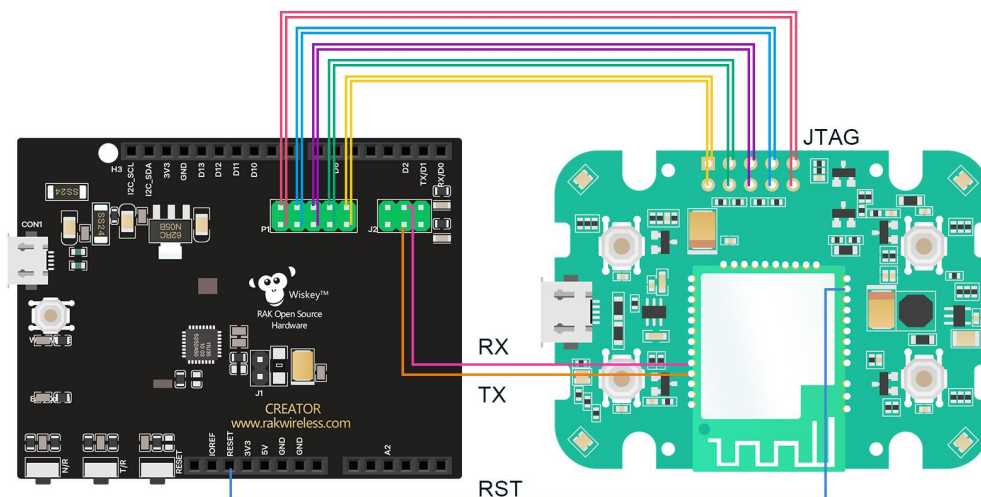
### 1.Required materials (hardware, tools)

- DashButton x 1
- PC x 1
- CREATOR pro x 1

### 2.Development environment

The DashButton use the CREATOR pro to download the program, so the development environment is same as the CREATOR pro, can see the document :[CREATOR pro Development environment](#) .

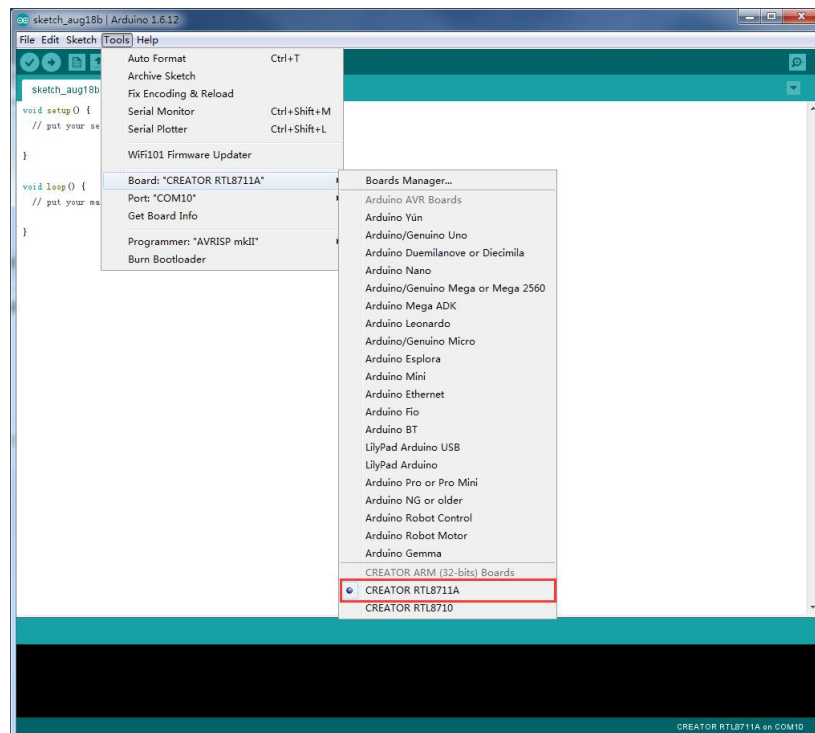
The Hardware connection see below :



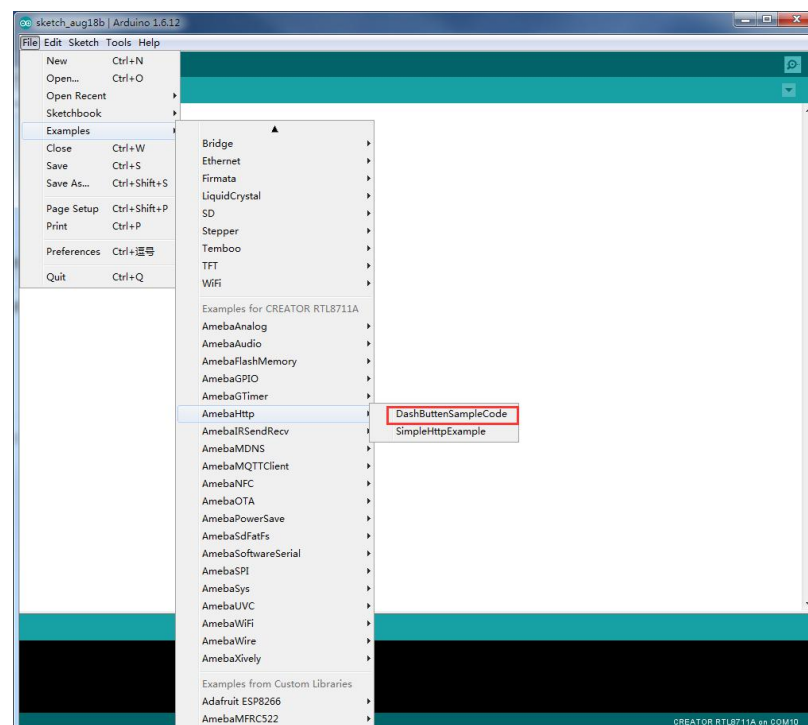
### 3.First Example

If you have installed the CREATOR pro Arduino development environment, you can see the DashButton Example.

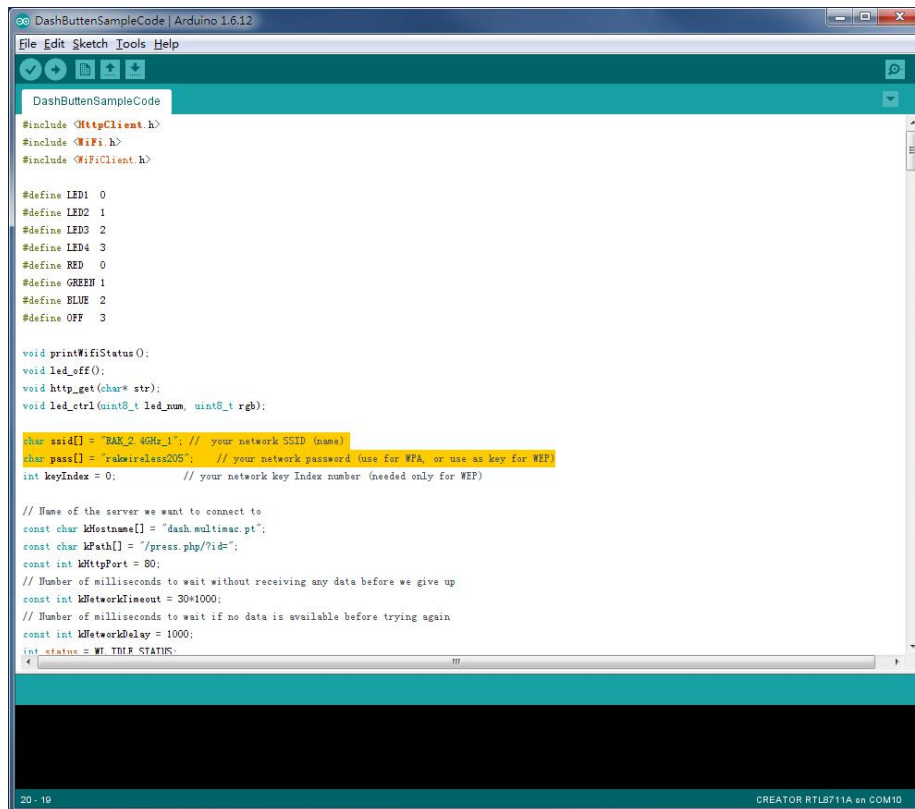
① First, make sure CREATOR pro is selected in Arduino IDE: "Tools" -> "Board" -> "CREATOR RTL8711A"(NOTE:RTL8195 and RTL8711 are compatible)



② Next, Open the DashButton example, "File" -> "Examples" -> "AmebaHttp" -> "DashButtonSampleCode"



③ In the place marked below, you can modify the module needs to connect the router's SSID and password.



```

DashButtonSampleCode

#include <HttpClient.h>
#include <Wifi.h>
#include <WifiClient.h>

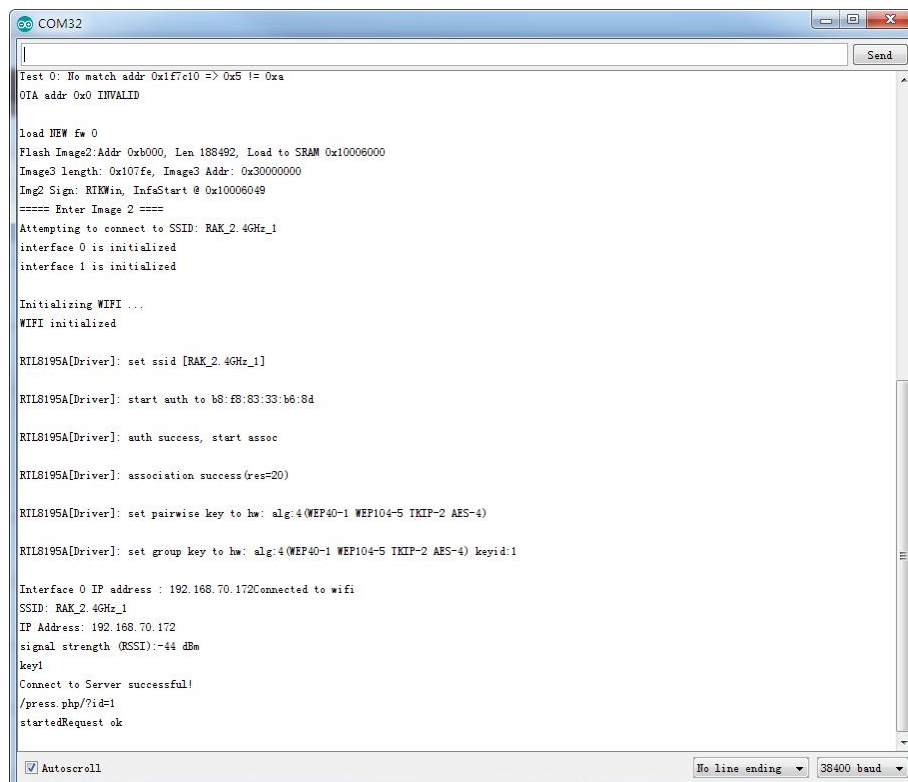
#define LED1 0
#define LED2 1
#define LED3 2
#define LED4 3
#define RED 0
#define GREEN 1
#define BLUE 2
#define OFF 3

void printWifiStatus();
void led_off();
void http_get(char* str);
void led_ctrl(uint8_t led_num, uint8_t rgb);

char ssid[] = "RAK_2_4GHz_1"; // your network SSID (name)
char pass[] = "rakwireless205"; // your network password (use for WPA, or use an key for WEP)
int keyIndex = 0; // your network key Index number (needed only for WEP)

// Name of the server we want to connect to
const char kHostName[] = "dash.multimac.pt";
const char kPath[] = "/press.php/?id=";
const int kHttpPort = 80;
// Number of milliseconds to wait without receiving any data before we give up
const int kNetworkTimeout = 30*1000;
// Number of milliseconds to wait if no data is available before trying again
const int kNetworkDelay = 1000;
int status = WL_THINK_STATIS;
  
```

④ Then upload the sample code and press reset, and you can see related information shown in serial monitor.



```

COM32

Test 0: No match addr 0x1f7c10 => 0x5 != 0xa
OTA addr 0x0 INVALID

Load NEW fw 0
Flash Image2:Addr 0xb000, Len 188492, Load to SRAM 0x10006000
Image3 length: 0x107fe, Image3 Addr: 0x30000000
Img2 Sign: RIKWin, InfoStart @ 0x10006049
===== Enter Image 2 =====
Attempting to connect to SSID: RAK_2_4GHz_1
interface 0 is initialized
interface 1 is initialized

Initializing WIFI ...
WIFI initialized

RTL8195A[Driver]: set ssid [RAK_2_4GHz_1]

RTL8195A[Driver]: start auth to b8:fb:83:33:b6:8d

RTL8195A[Driver]: auth success, start assoc

RTL8195A[Driver]: association success(res=20)

RTL8195A[Driver]: set pairwise key to hw: alg:4(WEP40-1 WEP104-5 TKIP-2 AES-4)

RTL8195A[Driver]: set group key to hw: alg:4(WEP40-1 WEP104-5 TKIP-2 AES-4) keyid:1

Interface 0 IP address : 192.168.70.172Connected to wifi
SSID: RAK_2_4GHz_1
IP Address: 192.168.70.172
signal strength (RSSI):-44 dBm
key1
Connect to Server successful!
/press.php/?id=1
startedRequest ok

[Autoscroll] [No line ending] [38400 baud]
  
```

## 4.Version

Version	Author	Date	Content modification
V1.0	chace.cao	2017/08/18	Create document